




1

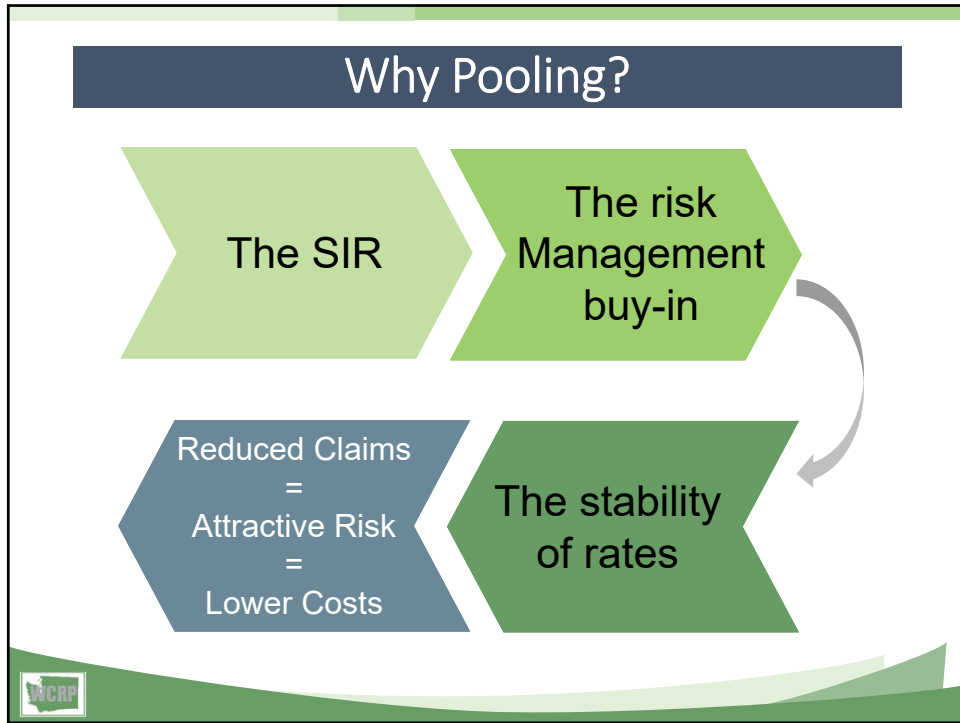
## Pooling in Washington

<b>RCW 48:</b>	Insurance
<b>RCW 48.62:</b>	Local Government Insurance
<b>RCW 48.62.061: &amp; 48.62.071</b>	Risk Manager approves program and sets rules
<b>WAC 200-100:</b>	The Rules

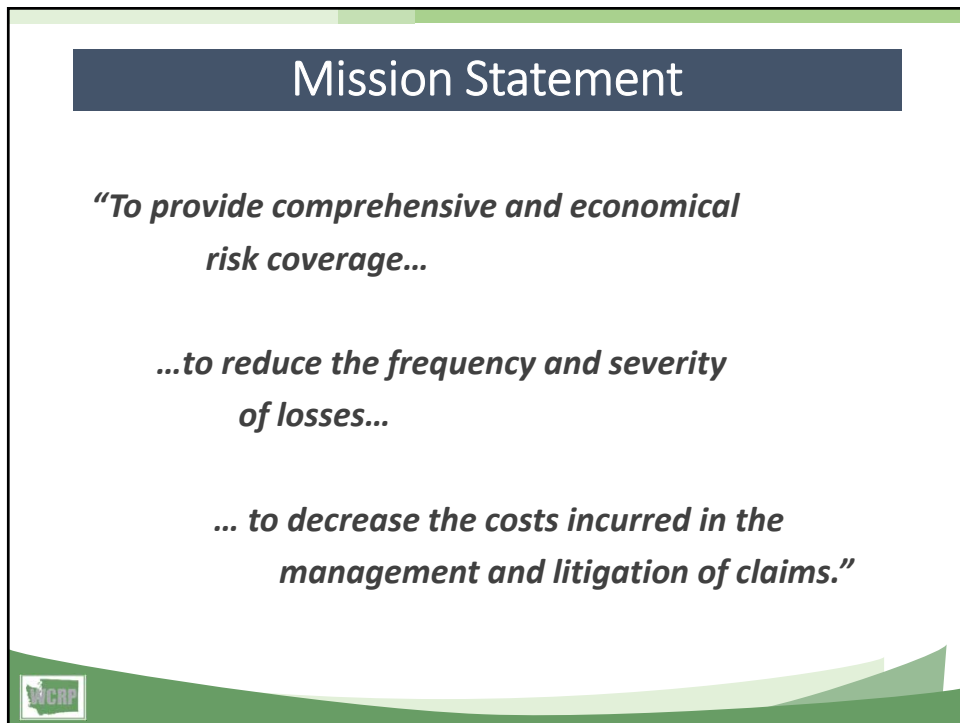
- Pools form through interlocal agreement
- Members are in until they withdraw at end of Fiscal Year
- Withdrawing member must put in *Notice of Intent to Withdraw* 12 months prior to end of Fiscal Year.
- Fiscal Year = *October 1 – September 30*



2

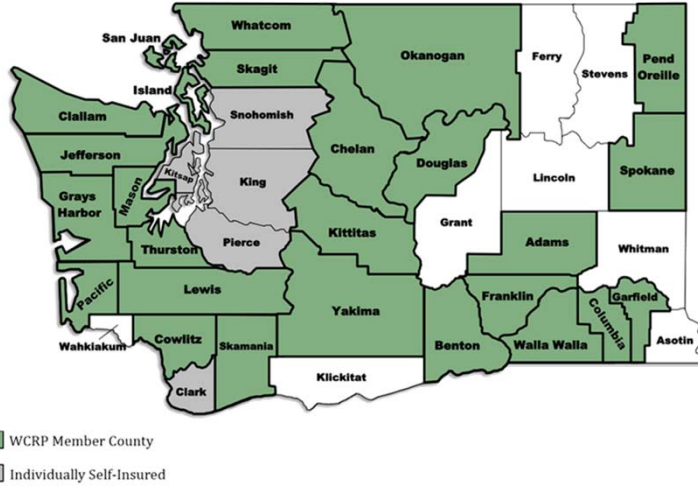


3



4

# The Membership



5

# Organizational Structure

## BOARD OF DIRECTORS

*Each Member County appoints Director and Alternate Director(s)*

## EXECUTIVE COMMITTEE

*11 members elected from/by Board of Directors*

## INVESTMENT COMMITTEE

*Sec/Tre, FC Chair, Exec Director and Two (2) Other Directors/Alternates*

*Standing Committees: Finance, Personnel, Risk Management & Underwriting*

## WCRP STAFF

*Executive Director  
Administrative Services - Member Services - Claims Services - Risk Services*

6

## Board of Directors

- **One Board Director from each member**
- **Appointed by county legislative authority**
- **One vote per member**
- **One, two, or three alternate directors often appointed.**
- **BOD meets three times per year – (1) Spring Conference; (2) Summer Conference & Annual Meeting, and (3) Fall Conference**
- **Appoints designated Risk Manager and Claims Administrator**



7

## County Appointed Positions

- **Claims Administrator**
  - Coordinates member county claim reporting and administration
  - Keeps a log of all claims and lawsuits for the member county
  - Reports claims and provides critical claim information to the Pool.
  - Serves as liaison between the member county and the Pool's claim staff
- **Risk Manager**
  - Oversees risk management function at county level
  - Serves as liaison between the member county and the Pool's risk management program
  - Reports county risk management efforts annually to the Pool
  - Carries out the provisions of the Membership Compact



8

## Board of Directors

- **Policymaking**
  - Financial Management Policy
  - Underwriting Policy
  - Risk Management Policy
  - Personnel & Travel Policy
  - Claims Handling Policies & Procedures
- **Financial Decision-making**
  - Set Funding Target
  - Approve Annual Budget and Assessment Rating
- **Administrative Decision-making**
  - Approve vendor and Executive Director contracts
  - Approve insurance, reinsurance, and ancillary renewals
  - Vote for or appoint Executive Committee members



9

## Organizational Structure

### BOARD OF DIRECTORS

*Each Member County appoints  
Director and Alternate Director(s)*

### EXECUTIVE COMMITTEE

*11 members elected from/by  
Board of Directors*

### INVESTMENT COMMITTEE

*Sec/Tre, FC Chair, Exec Director and  
Two (2) Other Directors/Alternates*

*Standing Committees: Finance, Personnel,  
Risk Management & Underwriting*

### WCRP STAFF

*Executive Director  
Administrative Services - Member Services - Claims Services - Risk Services*



10

## Executive and Investment Committee

- **Executive Committee:**

- Elected from Board of Directors
- President, Vice-President, Secretary/Treasurer
- Operational governance/oversight
- Submit recommendations to Board of Directors for approval
- Exercise authority where delegated

- **Investment Committee:**

- Appointed or affirmed from Board of Directors
- Provides oversight of WCRP's investment program and contracted independent advisor (Chandler Asset Management)



11

## Organizational Structure

### BOARD OF DIRECTORS

*Each Member County appoints  
Director and Alternate Director(s)*

### EXECUTIVE COMMITTEE

*11 members elected from/by  
Board of Directors*

### INVESTMENT COMMITTEE

*Sec/Tre, FC Chair, Exec Director and  
Two (2) Other Directors/Alternates*

*Standing Committees: Finance, Personnel,  
Risk Management & Underwriting*

### WCRP STAFF

*Executive Director  
Administrative Services - Member Services - Claims Services - Risk Services*



12

## Standing Committees

*Committee Members are Appointed by WCRP Board President*

- **Finance Committee:**
  - Reviews/amends WCRP Financial Management Policy; Evaluates and reviews annual budget, Pool accounting practices, and financial reporting procedures.
- **Risk Management Committee:**
  - Reviews/amends WCRP Risk Management Policy; Evaluates and analyzes risk and exposure, participates in identifying Pool loss control activities and Compact compliance.
- **Underwriting Committee:**
  - Reviews/amends WCRP Underwriting Policy; Reviews/amends Memorandum of Liability Coverage (MLC), identifies assessment criteria, evaluates new members; Reviews/amends Claims Handling Policies & Procedures.
- **Personnel Committee:**
  - Reviews/amends Personnel Policy; Evaluates Pool organizational structure, compensation and benefits.



13

## Organizational Structure

### BOARD OF DIRECTORS

*Each Member County appoints  
Director and Alternate Director(s)*

### EXECUTIVE COMMITTEE

*11 members elected from/by  
Board of Directors*

### INVESTMENT COMMITTEE

*Sec/Tre, FC Chair, Exec Director and  
Two (2) Other Directors/Alternates*

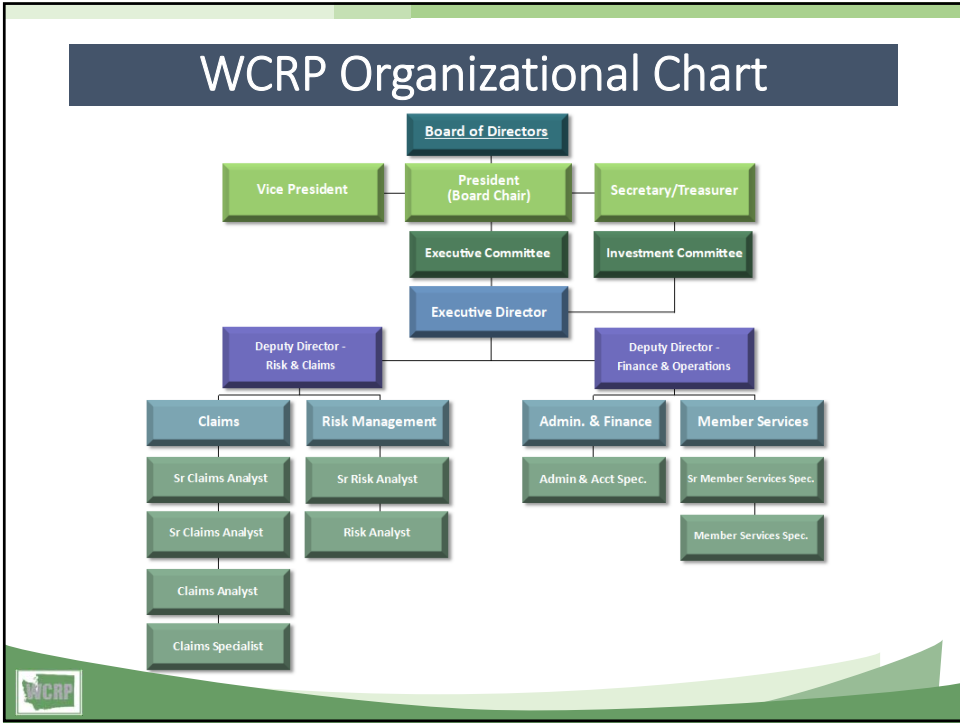
*Standing Committees: Finance, Personnel,  
Risk Management & Underwriting*

### WCRP STAFF

*Executive Director  
Administrative Services - Member Services - Claims Services - Risk Services*



14



15



16



## Finance & Operations

- Management of Operating Budget
- Marketing and Underwriting
- Financial and Statutory Reporting
- Strategic Planning, Organizational Development
- Personnel Management and Development
- Investment Oversight
- WCRP Office Operations

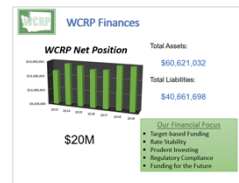
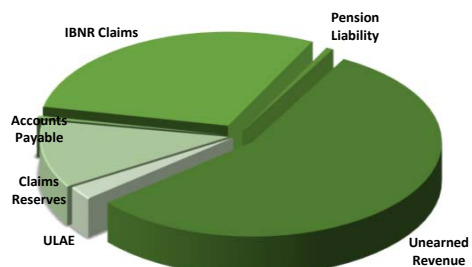
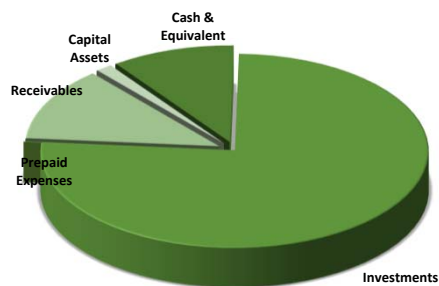
17



## WCRP Finances

**TOTAL ASSETS = \$60,621,032**

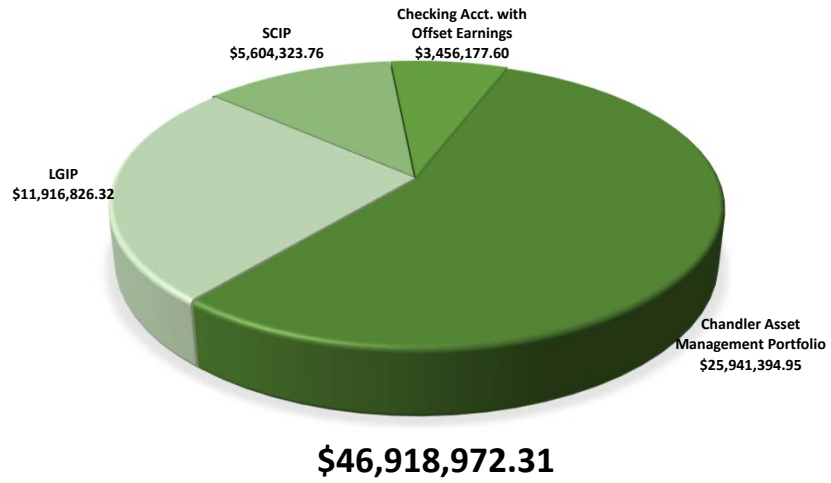
**TOTAL LIABILITIES= \$40,661,698**



18



## WCRP Finances - Investments



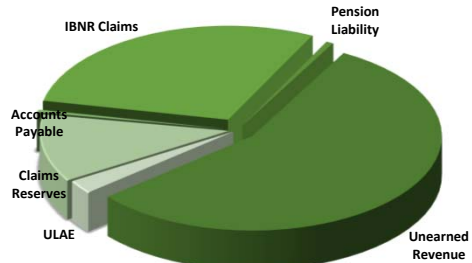
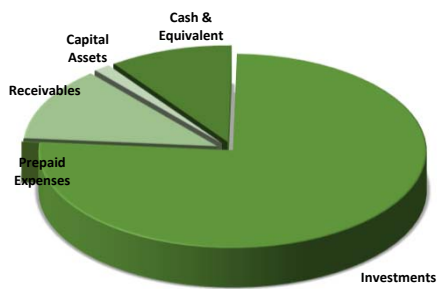
19



## WCRP Finances

**TOTAL ASSETS = \$60,621,032**

**TOTAL LIABILITIES = \$40,661,698**

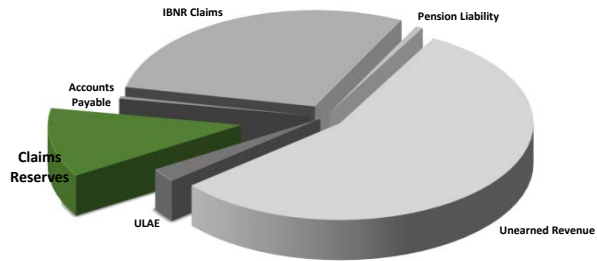


20



## WCRP Finances

**TOTAL LIABILITIES= \$40,661,698**

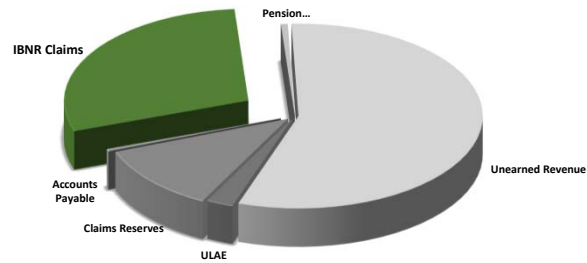


21



## WCRP Finances

**TOTAL LIABILITIES= \$40,661,698**

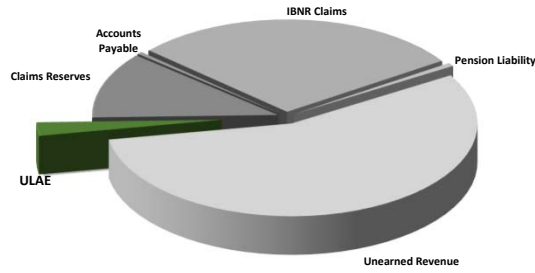


22



## WCRP Finances

**TOTAL LIABILITIES= \$40,661,698**



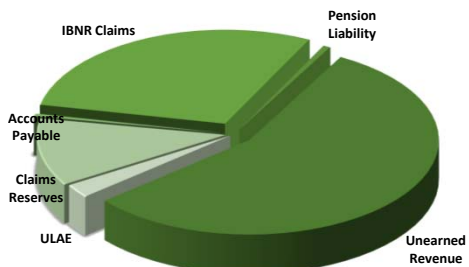
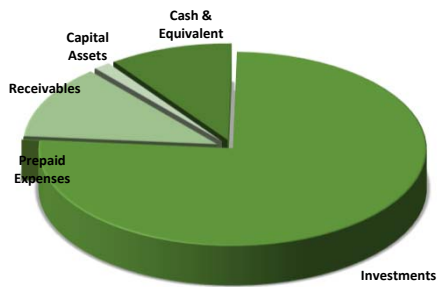
23



## WCRP Finances

**TOTAL ASSETS = \$60,621,032**

**TOTAL LIABILITIES= \$40,661,698**

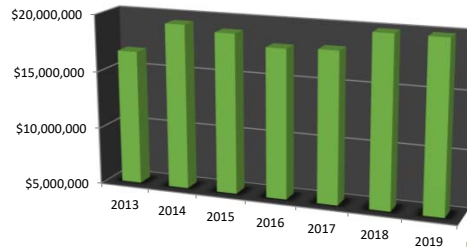


24



## WCRP Finances

### WCRP Net Position



**\$20M**

Total Assets:

**\$60,621,032**

Total Liabilities:

**\$40,661,698**

#### Our Financial Focus

- Target-based Funding
- Rate Stability
- Prudent Investing
- Regulatory Compliance
- Funding for the Future

25



## WCRP Finances - Net Position

### C. NET POSITION

1. The Pool's Net Position is defined as the balance after the Pool's actuarially determined current and non-current liabilities are deducted from the Pool's total current and non-current assets.
2. The Pool's Net Position may be used as a financial reserve for adverse loss experience, rate stabilization or reduction, decreased dependence on commercial insurance, investment return risk, and other uses as determined by the Board including refunds
3. A surplus may be recognized by the Board of Directors for the amount of the Net Position which is in excess of the funding required to meet the high-end of the Pool's current funding target set by the Board of Directors.
4. A surplus identified by the Board may be returned to the Pool's fund balance (Net Position) for continued target funding, or refunded according to a formula approved by the Board based on the deposit assessments for the Pool's operations, including self-insured retention and reinsurance amounts, during the fiscal year(s) where a surplus has been identified.

Source: WCRP Underwriting Policy – Page 2

26



## WCRP Finances - Net Position

### C. NET POSITION

1. The Pool's Net Position is defined as the balance after the Pool's actuarially determined **current and non-current liabilities are deducted from the Pool's total current and non-current assets**.
2. The Pool's Net Position may be used as a financial reserve for adverse loss experience, rate stabilization or reduction, decreased dependence on commercial insurance, investment return risk, and other uses as determined by the Board including refunds
3. A surplus may be recognized by the Board of Directors for the amount of the Net Position which is in excess of the funding required to meet the high-end of the Pool's current funding target set by the Board of Directors.
4. A surplus identified by the Board may be returned to the Pool's fund balance (Net Position) for continued target funding, or refunded according to a formula approved by the Board based on the deposit assessments for the Pool's operations, including self-insured retention and reinsurance amounts, during the fiscal year(s) where a surplus has been identified.

Source: WCRP Underwriting Policy – Page 2

27



## WCRP Finances - Net Position

### C. NET POSITION

1. The Pool's Net Position is defined as the balance after the Pool's actuarially determined **current and non-current liabilities are deducted from the Pool's total current and non-current assets**.
2. The Pool's Net Position may be used as a financial **reserve for adverse loss experience, rate stabilization or reduction, decreased dependence on commercial insurance, investment return risk, and other uses** as determined by the Board including refunds
3. A surplus may be recognized by the Board of Directors for the amount of the Net Position which is in excess of the funding required to meet the high-end of the Pool's current funding target set by the Board of Directors.
4. A surplus identified by the Board may be returned to the Pool's fund balance (Net Position) for continued target funding, or refunded according to a formula approved by the Board based on the deposit assessments for the Pool's operations, including self-insured retention and reinsurance amounts, during the fiscal year(s) where a surplus has been identified.

Source: WCRP Underwriting Policy – Page 2

28



## WCRP Finances - Net Position

### C. NET POSITION

1. The Pool's Net Position is defined as the balance after the Pool's actuarially determined current and non-current liabilities are deducted from the Pool's total current and non-current assets.
2. The Pool's Net Position may be used as a financial reserve for adverse loss experience, rate stabilization or reduction, decreased dependence on commercial insurance, investment return risk, and other uses as determined by the Board including refunds
3. A surplus may be recognized by the Board of Directors for the amount of the Net Position which is in excess of the funding required to meet the high-end of the Pool's current funding target set by the Board of Directors.
4. A surplus identified by the Board may be returned to the Pool's fund balance (Net Position) for continued target funding, or refunded according to a formula approved by the Board based on the deposit assessments for the Pool's operations, including self-insured retention and reinsurance amounts, during the fiscal year(s) where a surplus has been identified.

Source: WCRP Underwriting Policy – Page 2

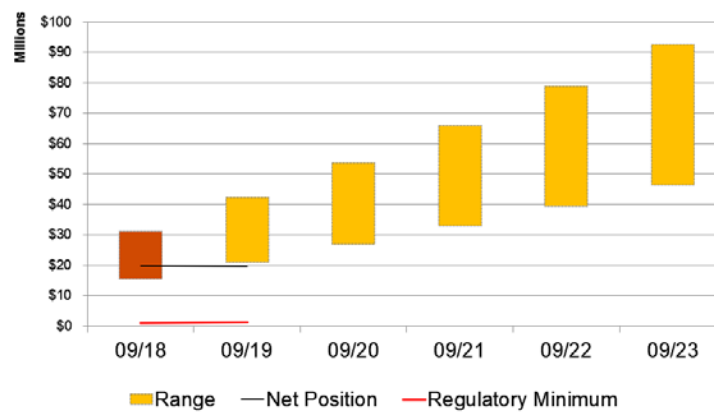
29



## WCRP Finances – Funding Target

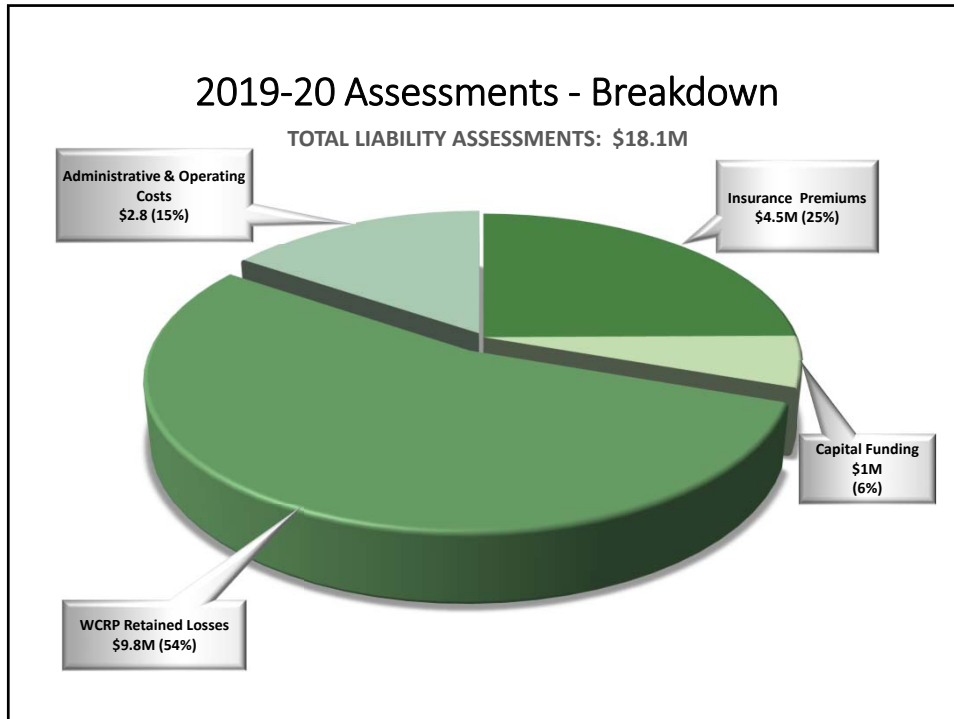
### Risk Capital Target – Liability Only

1-in-100 year event to 2 times a 1-in-100 year event



PwC | Actuarial Review

30



31

## Member Services

- **Member Training & Education**
  - Targeted on-site and web-based trainings based on current loss trends
  - Membership Compact Training/Certification
  - Roundtables and Educational Forums
  - Agency and Association Partnering – Other Risk Pools & WSAC, WACO, CTI/CPO, WAPA, WASPC, CRAB
- **Scholarships**
  - Cost of registration for various educational courses, conferences and seminars
- **Asset Management Platform (AMP)**
  - Online inventory management system for housing:
    - Buildings & Contents
    - Vehicles
    - Equipment

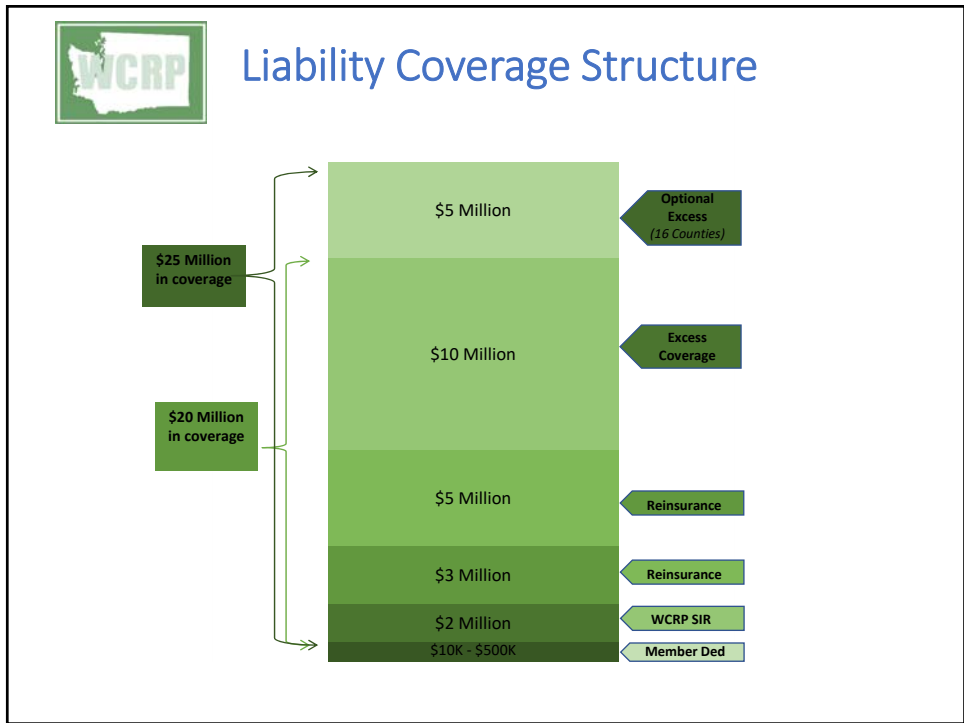


32





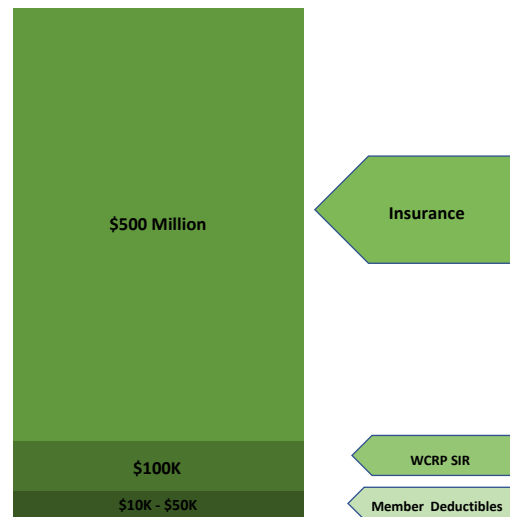
33



34



## Property Coverage Structure



35



## Coverage Overview

### Liability

\$20M in limits (\$5M Option)  
\$2,000,000 Pool SIR  
\$10K-\$500K County Deductibles

### First Party Property

\$500M in limits  
\$100K Pool Deductible  
\$5-50K County Deductibles

### Cyber

\$2M / \$10M Limits  
\$25K (moving to \$100K) Pool SIR  
\$0 County Deductibles

### Terrorism

\$100M in property limits  
\$25M in liability limits  
\$0 Pool SIR – Liability  
\$10K Pool SIR - Property  
\$0 County Deductibles

36

## Claims

- Adjust claims and manage defense counsel
- Interpret and apply Memorandum of Liability Coverage (MLC)
- Report to and work with Insurers on larger losses
- Pre-defense Reviews
- Electronic claims reporting, database management, and computer-generated loss runs
- Coordinate with county designated Claims Administrator



37

## Risk Management

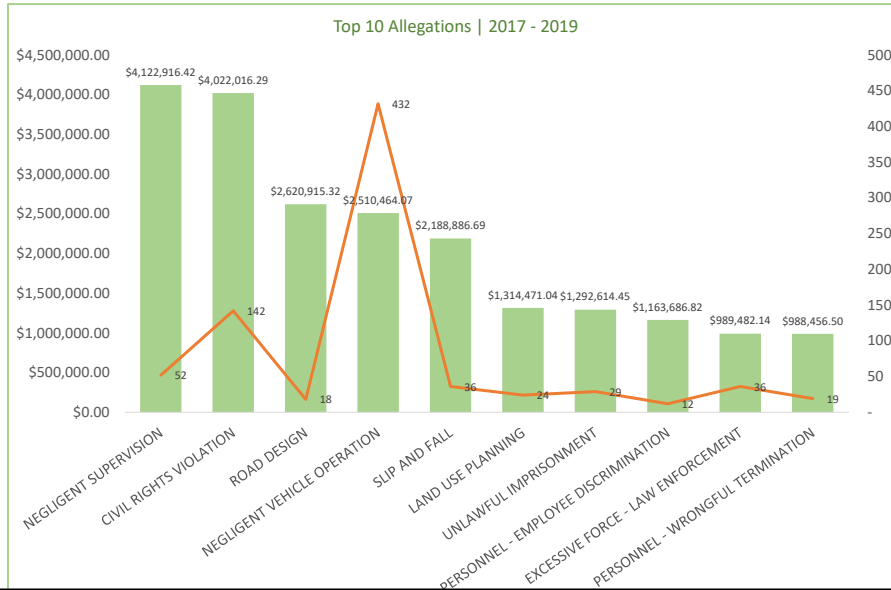
- Pool-wide Risk Management
- Training Development – Educational Roundtables
- Site Visits / Exposure Assessment
- Risk Management Policy Implementation
- Online Reference Library with Sample Policies
- Coordinate with county designated Risk Manager
- Data Analytics



38



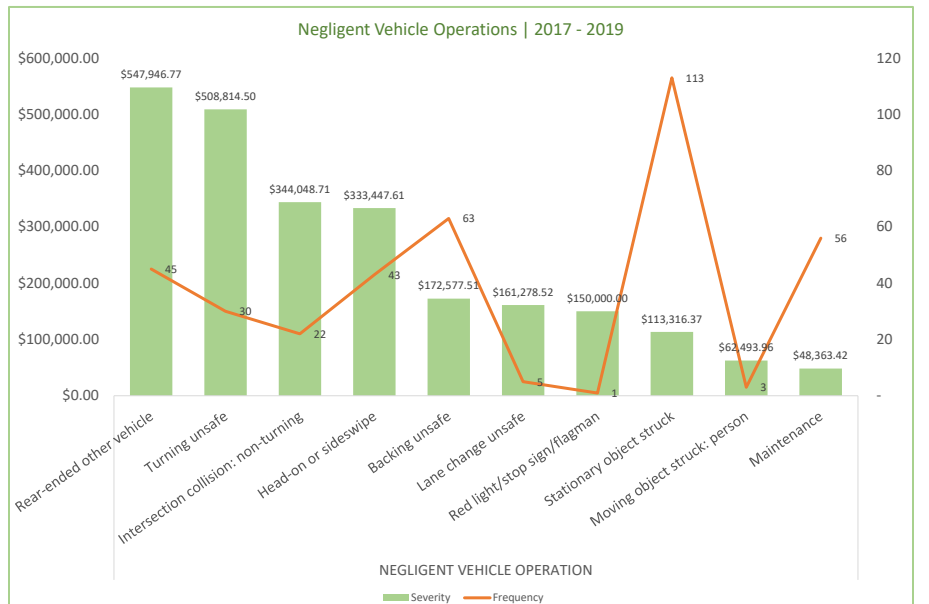
## WCRP Data Analytics – Allegations



39



## WCRP Data Analytics – Vehicle Ops



40



## Contact Information

### Pool Administration

#### Executive Director

Derek Bryan  
(360) 292-4497

#### Finance & Operations

Jenifer Sliva  
Deputy Director of Finance & Operations  
(360) 292-4496

#### Risk & Claims

Chuck Boyd  
Deputy Director of Risk & Claims  
(360) 292-4495

### Pool Departments

#### Member Services

[Memberservices@wcrp.wa.gov](mailto:Memberservices@wcrp.wa.gov)

#### Risk & Claims

[Risk-Claims@wcrp.wa.gov](mailto:Risk-Claims@wcrp.wa.gov)

41



42